

**AERODROME  
CHART**

37°26'45"N  
127°06'51"E

ELEV 28 m

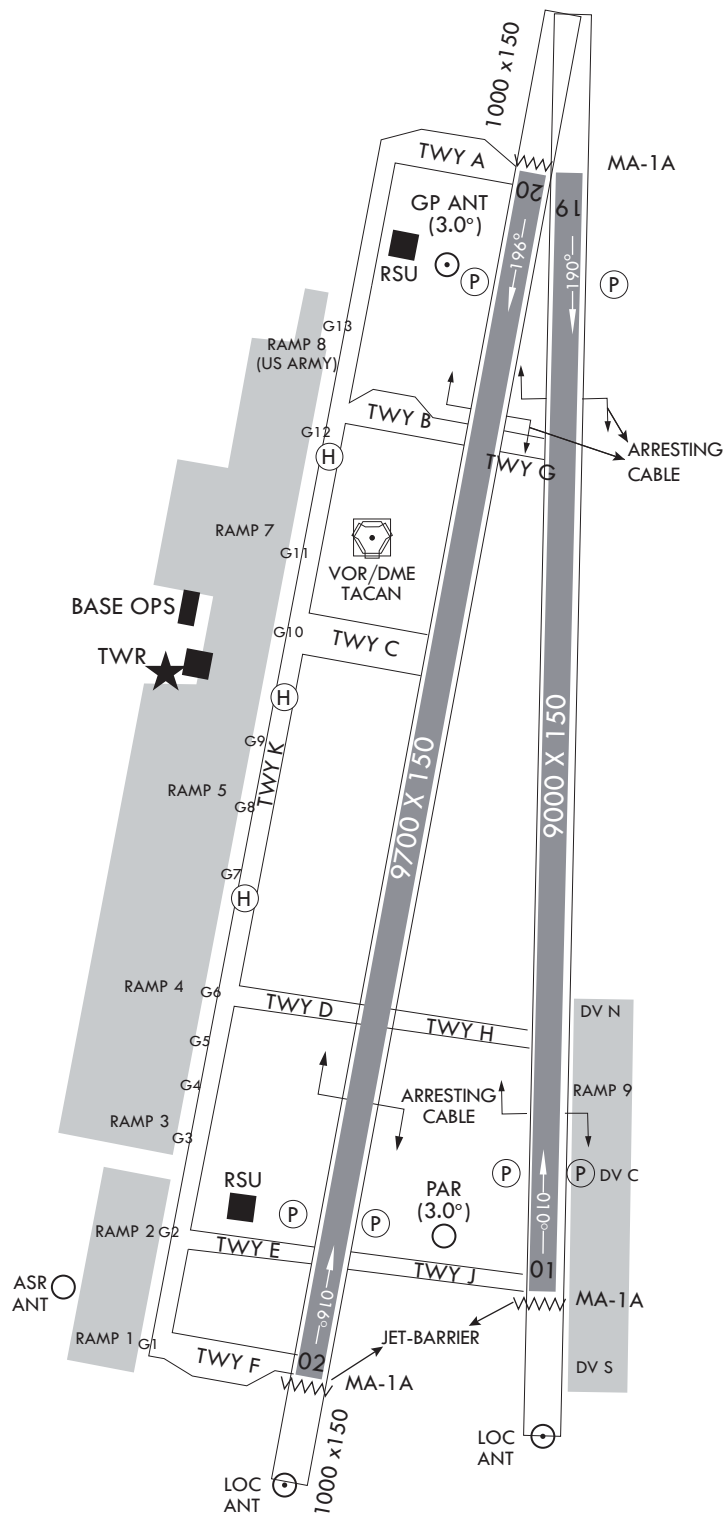
TWR	234.5	236.6	126.2
GND	275.8	121.85	

SEOUL/Seoul

ELEVATIONS IN METERS  
DIMENSION IN FEET  
BEARINGS ARE MAGNETIC



VAR 8° W 2017  
ANNUAL RATE OF CHANGE  
4' W



NOT TO SCALE

Change : Amended coordinate format.

**INTENTIONALLY**

**LEFT**

**BLANK**