

22027

# AIRPORT DIAGRAM

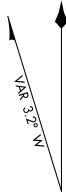
AL-5180 (FAA)

COLES COUNTY MEML (MTO)  
MATTOON/CHARLESTON, ILLINOIS

ASOS  
118.475  
CTAF/UNICOM  
122.7



FIELD  
ELEV  
722



JANUARY 2020  
ANNUAL RATE OF CHANGE  
0.1° W

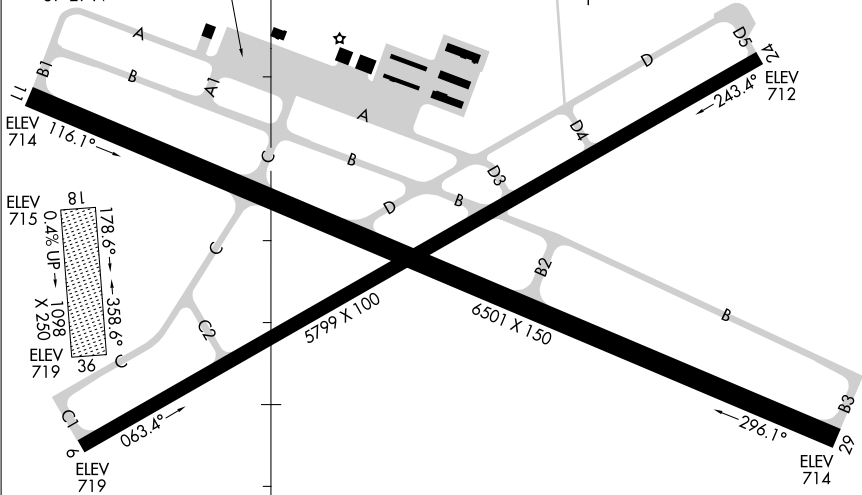
A 780

APRON

FIRE STATION

39°29'N

EC-3, 18 APR 2024 to 16 MAY 2024



ELEV 714  
ELEV 715  
ELEV 719

RWY 06-24  
PCN 23 F/D/X/U  
S-50, D-70, 2D-117

RWY 11-29  
PCN 51 F/D/X/U  
S-100, D-180, 2D-280

39°28'N

088°17'W

088°16'W

EC-3, 18 APR 2024 to 16 MAY 2024

# AIRPORT DIAGRAM

22027

MATTOON/CHARLESTON, ILLINOIS  
COLES COUNTY MEML (MTO)