

AIRPORT DIAGRAM

AL-78 (FAA)

CHARLOTTE/DOUGLAS INTL (CLT)
CHARLOTTE, NORTH CAROLINA

D-ATIS ARR 121.15
DEP 132.1

CHARLOTTE TOWER

118.1 257.8 (RWYS 18L-36R, 05-23)
126.4 257.8 (RWY 18C-36C)
133.35 257.8 (RWY 18R-36L)

GND CON

121.8 348.6 (WEST)
121.9 348.6 (EAST)

CLNC DEL

127.15 348.6

CPDLC

PDC

D

ASDE-X in use. Operate transponders with altitude reporting mode and ADS-B (if equipped) enabled on all airport surfaces.

Runway Status Lights in operation.

35°14'N

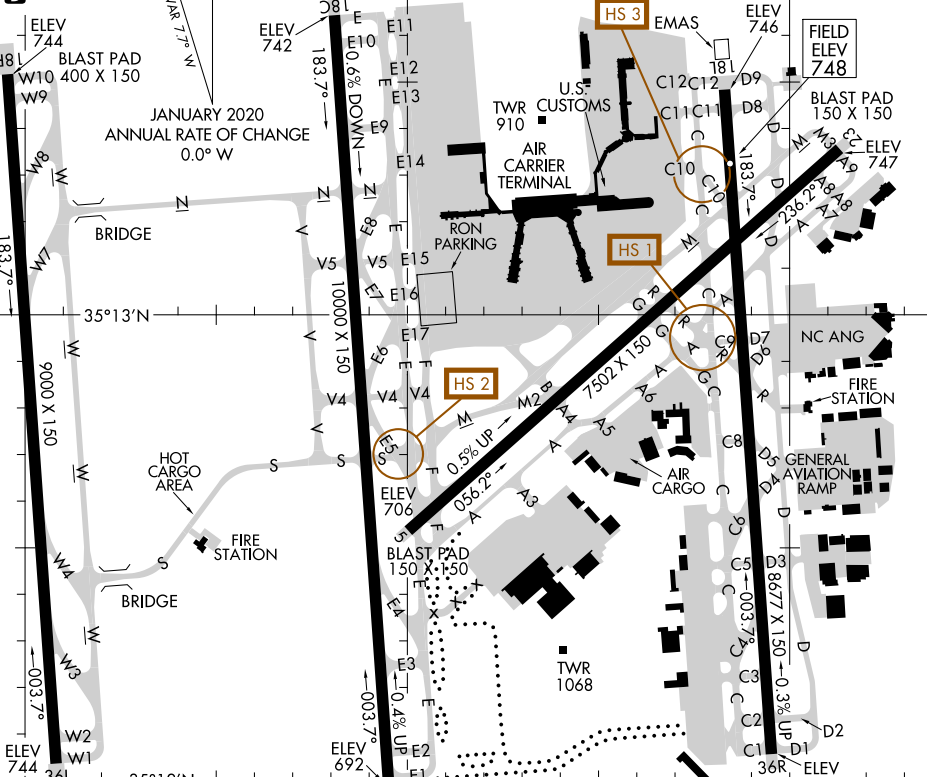
BLAST PAD 200 X 150
ELEV 742
183.7°
0.6% DOWN
JANUARY 2020 ANNUAL RATE OF CHANGE 0.0° W
VAR 7.7° W

FIELD ELEV 748

BLAST PAD 150 X 150
ELEV 747

SE-2, 19 MAY 2022 to 16 JUN 2022

SE-2, 19 MAY 2022 to 16 JUN 2022



CAUTION: BE ALERT TO RUNWAY CROSSING CLEARANCES.
READBACK OF ALL RUNWAY HOLDING INSTRUCTIONS IS REQUIRED.

RWY 05-23
PCN 73 R/B/W/T
S-93, D-170, 2D-350, 2D/2D2-650
RWY 18C-36C
PCN 82 R/B/W/T
S-93, D-200, 2D-350, 2D/2D2-650

RWY 18L-36R
PCN 68 R/B/W/T
S-93, D-200, 2D-350, 2D/2D2-650
RWY 18R-36L
PCN 63 R/B/W/T
S-93, D-200, 2D-350, 2D/2D2-650

80°58'W

80°57'W

80°56'W

AIRPORT DIAGRAM

CHARLOTTE, NORTH CAROLINA
CHARLOTTE/DOUGLAS INTL (CLT)