

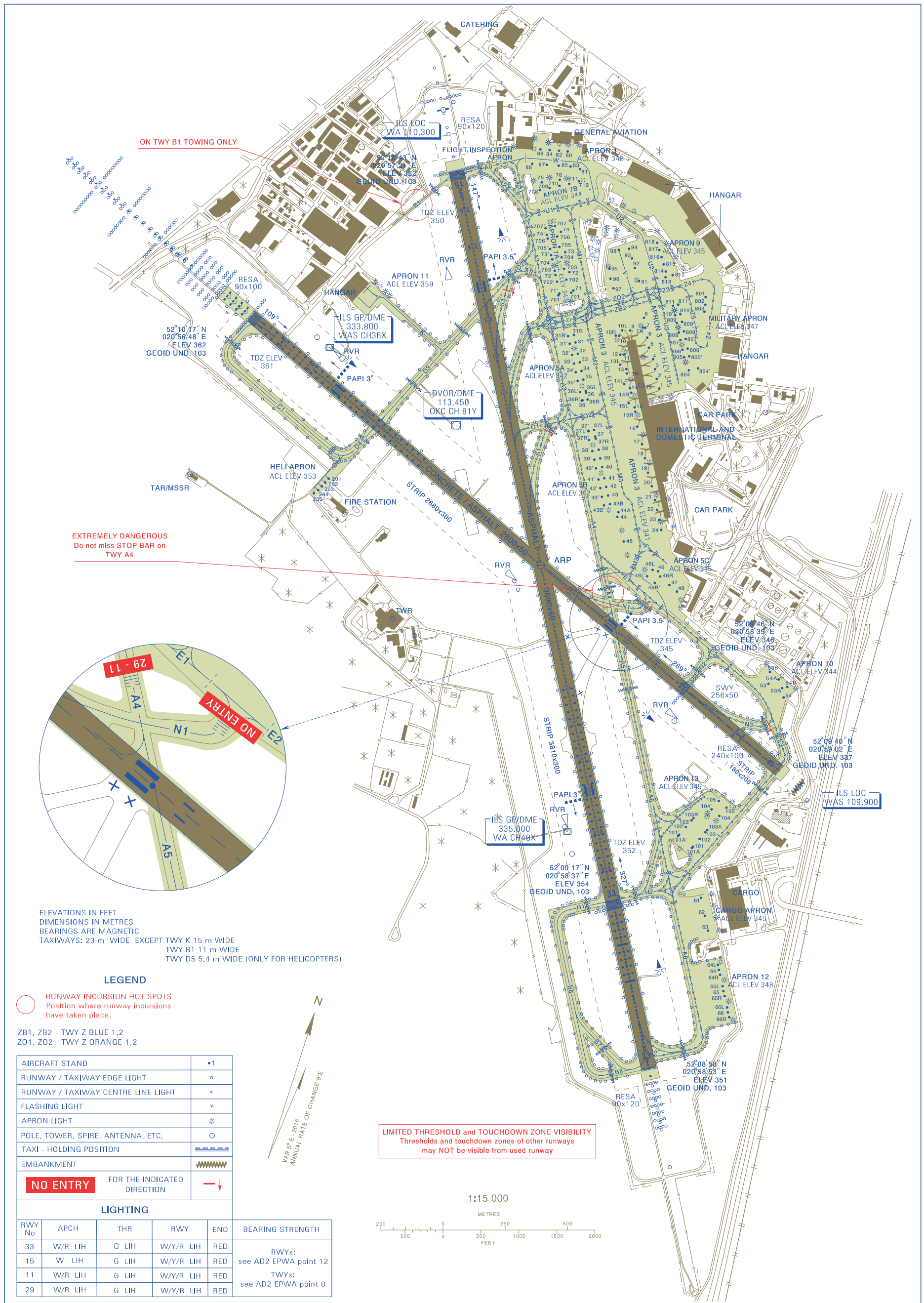
**AERODROME CHART - ICAO**

52°09'57" N  
020°58'02" E

ELEV 362 ft

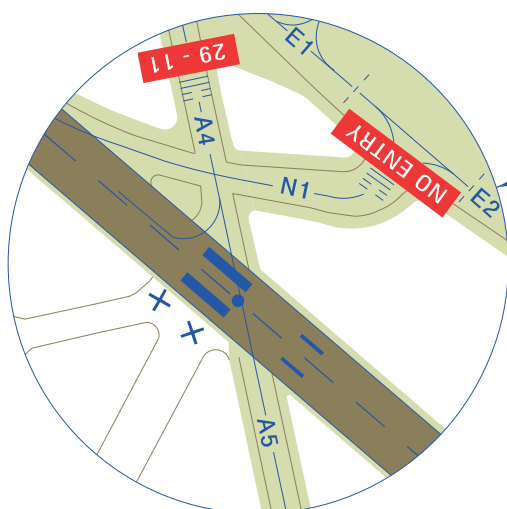
Okęcie TOWER 118.305  
Okęcie GROUND 121.905

**WARSAW CHOPIN AIRPORT**



ON TWY B1 TOWING ONLY

EXTREMELY DANGEROUS  
Do not miss STOP BAR on  
TWY A4



ELEVATIONS IN FEET  
DIMENSIONS IN METRES  
BEARINGS ARE MAGNETIC  
TAXIWAYS: 23 m WIDE EXCEPT TWY K 15 m WIDE  
TWY B1 11 m WIDE  
TWY D5 5.4 m WIDE (ONLY FOR HELICOPTERS)

**LEGEND**

○ RUNWAY INCURSION HOT SPOTS  
Position where runway incursions  
have taken place.

ZB1, ZB2 - TWY Z BLUE 1,2  
Z01, Z02 - TWY Z ORANGE 1,2

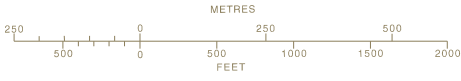
AIRCRAFT STAND	•1
RUNWAY / TAXIWAY EDGE LIGHT	○
RUNWAY / TAXIWAY CENTRE LINE LIGHT	◦
FLASHING LIGHT	v
APRON LIGHT	*
POLE, TOWER, SPIRE, ANTENNA, ETC.	○
TAXI - HOLDING POSITION	▬▬▬▬
EMBANKMENT	▬▬▬▬▬▬
<b>NO ENTRY</b> FOR THE INDICATED DIRECTION	→ ↓

**LIGHTING**

RWY No	APCH	THR	RWY	END	BEARING STRENGTH
33	W/R LIH	G LIH	W/Y/R LIH	RED	RWYs: see AD2 EPWA point 12
15	W LIH	G LIH	W/Y/R LIH	RED	TWYs: see AD2 EPWA point 8
11	W/R LIH	G LIH	W/Y/R LIH	RED	
29	W/R LIH	G LIH	W/Y/R LIH	RED	

LIMITED THRESHOLD and TOUCHDOWN ZONE VISIBILITY  
Thresholds and touchdown zones of other runways  
may NOT be visible from used runway

1:15 000



Zam. 5014