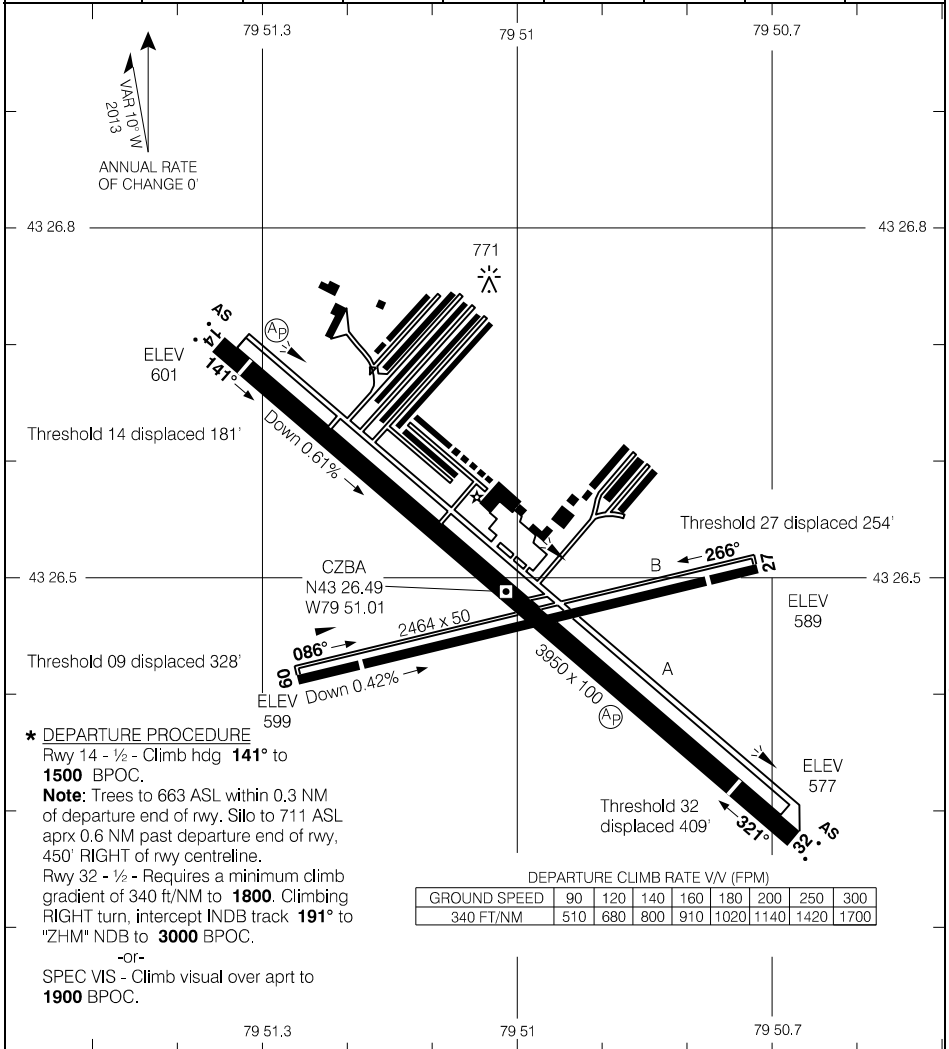


AERODROME CHART

					UNICOM - 123.5		TML Toronto - 119.3	
					ATF*			
DECL	DISTS	09	27	14	32			
TORA		2464	2464	3950	3950			
TODA		2464	2464	3950	3950			
ASDA		2464	2464	3950	3950			
LDA		2136	2210	3769	3541			



Source of Canadian Civil Aeronautical Data: © 2019 NAV CANADA All rights reserved

*** DEPARTURE PROCEDURE**

Rwy 14 - 1/2 - Climb hdg **141°** to **1500** BPOC.

Note: Trees to 663 ASL within 0.3 NM of departure end of rwy. Silo to 711 ASL aprx 0.6 NM past departure end of rwy, 450' RIGHT of rwy centreline.

Rwy 32 - 1/2 - Requires a minimum climb gradient of 340 ft/NM to **1800**. Climbing RIGHT turn, intercept INDB track **191°** to "ZHM" NDB to **3000** BPOC.

-or-

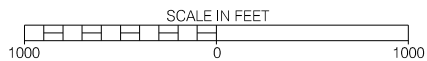
SPEC VIS - Climb visual over apt to **1900** BPOC.

DEPARTURE CLIMB RATE V/V (FPM)

GROUND SPEED	90	120	140	160	180	200	250	300
340 FT/NM	510	680	800	910	1020	1140	1420	1700

TAKE-OFF MINIMA

Rwys 14, 32: *
Rwys 09, 27: NOT ASSESSED



AERODROME CHART

EFF 27 APR 17

CZBA