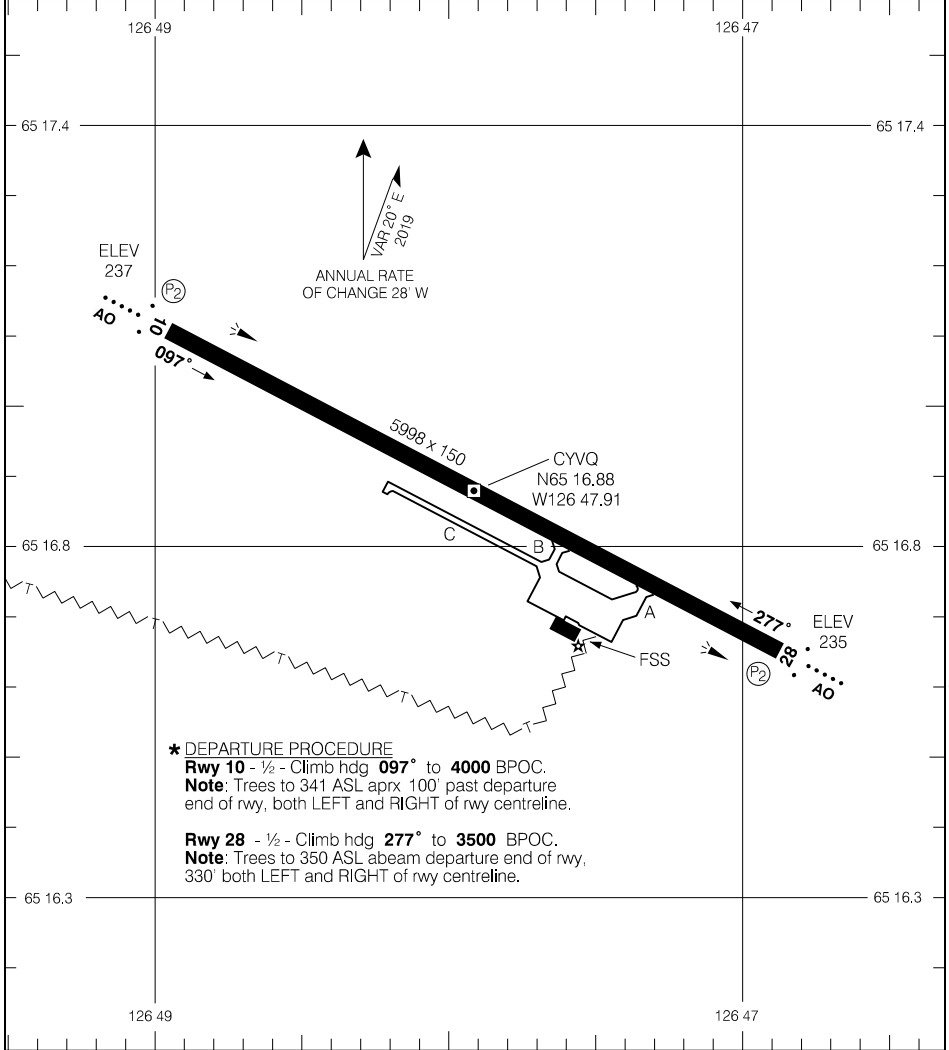


CYVQ-AD

NORMAN WELLS, NT  
CYVQ

AERODROME CHART

		RADIO - 122.2 282.3		CTR Edmonton - 134.82 RADIO Edmonton - 123.27	
				MF	
DECL DIST	10	28			
TORA	5998	5998			
TODA	6982	6982			
ASDA	5998	5998			
LDA	5998	5998			



**\* DEPARTURE PROCEDURE**

**Rwy 10** - 1/2 - Climb hdg **097°** to **4000** BPOC.

**Note:** Trees to 341 ASL aprx 100' past departure end of rwy, both LEFT and RIGHT of rwy centreline.

**Rwy 28** - 1/2 - Climb hdg **277°** to **3500** BPOC.

**Note:** Trees to 350 ASL abeam departure end of rwy, 330' both LEFT and RIGHT of rwy centreline.

TAKE-OFF MINIMA

Rwys 10, 28: \*

SCALE IN FEET



Source of Canadian Civil Aeronautical Data: © 2019 NAV CANADA All rights reserved

AERODROME CHART

EFF 28 FEB 19

CYVQ

CYVQ-AD