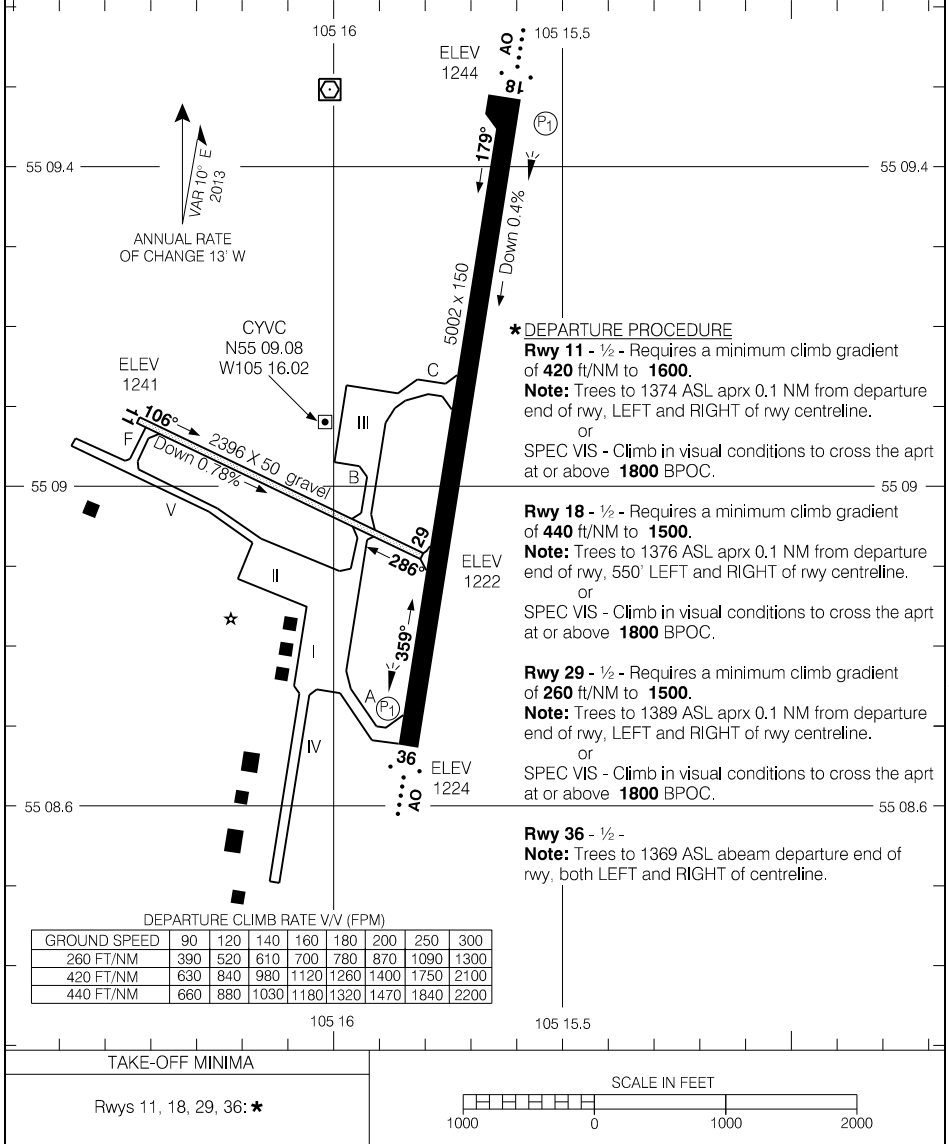


AERODROME CHART

					RADIO - 122.2		CTR Winnipeg - 126.4 RADIO Winnipeg - 123.55	
					MF			
DECL	DISTS	18	36	11	29			
TORA		5002	5002	2396	2396			
TODA		5986	5986	2986	2986			
ASDA		5002	5002	2396	2396			
LDA		5002	5002	2396	2396			



* DEPARTURE PROCEDURE

- Rwy 11** - 1/2 - Requires a minimum climb gradient of 420 ft/NM to 1600.
Note: Trees to 1374 ASL aprx 0.1 NM from departure end of rwy, LEFT and RIGHT of rwy centreline.
 or
 SPEC VIS - Climb in visual conditions to cross the apt at or above 1800 BPOC.
- Rwy 18** - 1/2 - Requires a minimum climb gradient of 440 ft/NM to 1500.
Note: Trees to 1376 ASL aprx 0.1 NM from departure end of rwy, 550' LEFT and RIGHT of rwy centreline.
 or
 SPEC VIS - Climb in visual conditions to cross the apt at or above 1800 BPOC.
- Rwy 29** - 1/2 - Requires a minimum climb gradient of 260 ft/NM to 1500.
Note: Trees to 1389 ASL aprx 0.1 NM from departure end of rwy, LEFT and RIGHT of rwy centreline.
 or
 SPEC VIS - Climb in visual conditions to cross the apt at or above 1800 BPOC.
- Rwy 36** - 1/2 -
Note: Trees to 1369 ASL abeam departure end of rwy, both LEFT and RIGHT of centreline.

Source of Canadian Civil Aeronautical Data: © 2019 NAV CANADA All rights reserved

AERODROME CHART

EFF 25 APR 19

CYVC