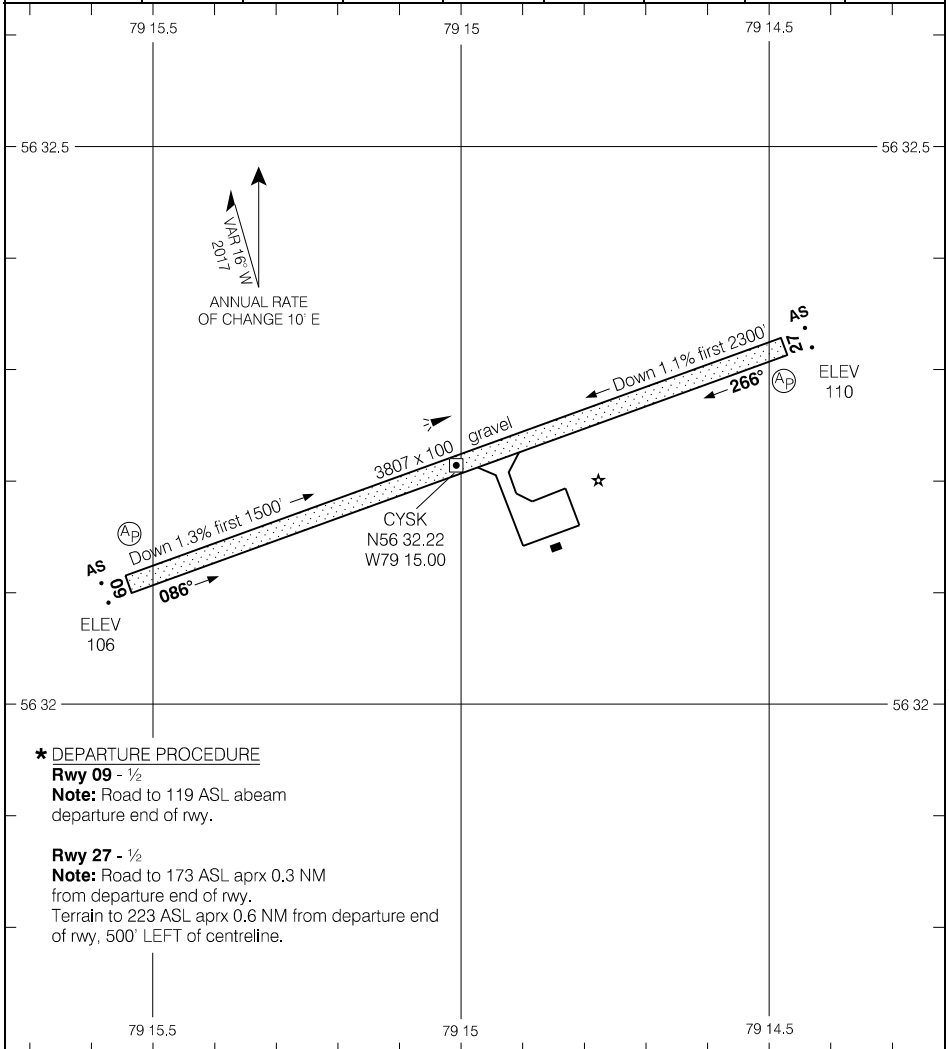


AERODROME CHART

| | | | | APRT RADIO - 122.1 TFC - 122.1 | | MF | |
|------|-------|------|------|-----------------------------------|--|----|--|
| DECL | DISTS | 09 | 27 | | | | |
| TORA | | 3807 | 3807 | | | | |
| TODA | | 4791 | 4791 | | | | |
| ASDA | | 3807 | 3807 | | | | |
| LDA | | 3807 | 3807 | | | | |



Source of Canadian Civil Aeronautical Data: © 2019 NAV CANADA All rights reserved

*** DEPARTURE PROCEDURE**

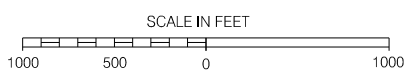
Rwy 09 - 1/2

Note: Road to 119 ASL abeam departure end of rwy.

Rwy 27 - 1/2

Note: Road to 173 ASL aprx 0.3 NM from departure end of rwy.
Terrain to 223 ASL aprx 0.6 NM from departure end of rwy, 500' LEFT of centreline.

| TAKE-OFF MINIMA |
|-----------------|
| Rwys 09, 27: * |



AERODROME CHART

EFF 29 MAR 18

CYSK