

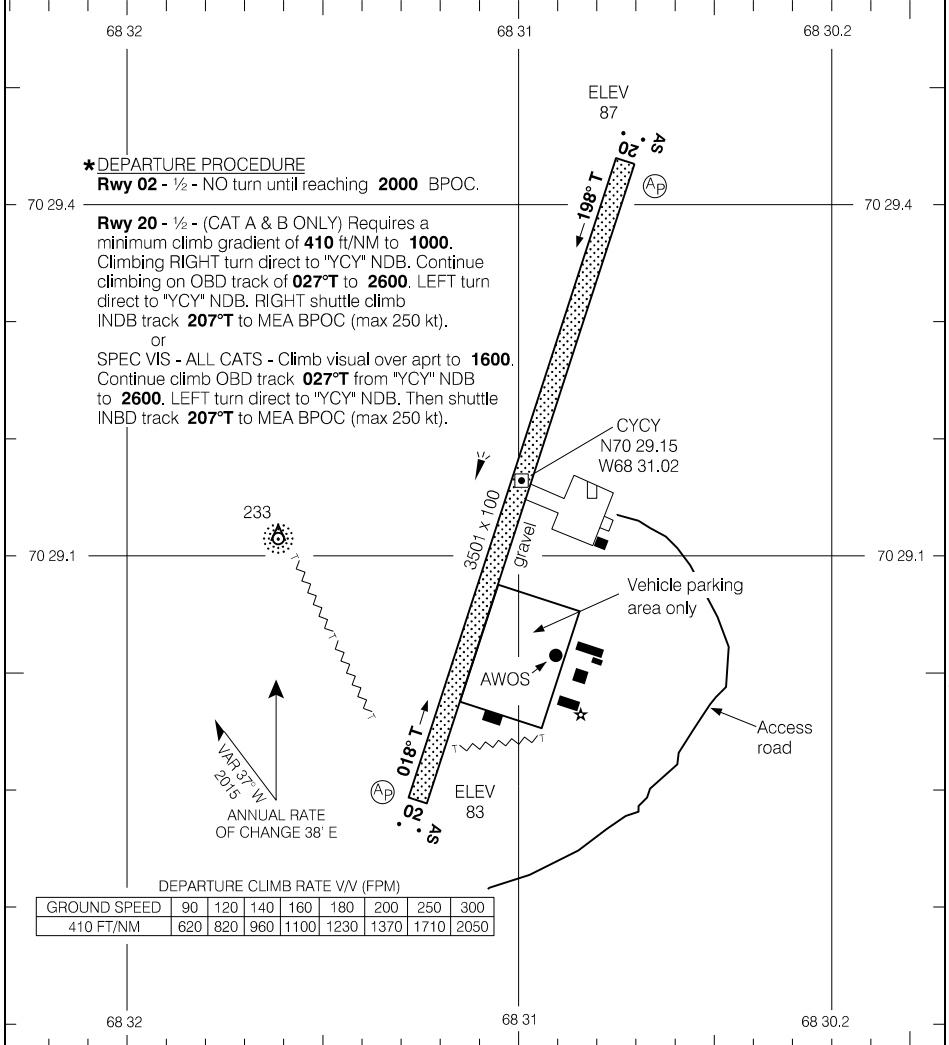
AERODROME CHART

AWOS - 124.6				APRT RADIO - 122.1			
				TFC - 122.1		MF	
DECL	DISTS	02	20				
TORA		3501	3501				
TODA		4485	4485				
ASDA		3501	3501				
LDA		3501	3501				

**\*DEPARTURE PROCEDURE**

**Rwy 02 - 1/2 - NO turn until reaching 2000 BPOC.**

**Rwy 20 - 1/2 - (CAT A & B ONLY)** Requires a minimum climb gradient of **410 ft/NM to 1000**. Climbing RIGHT turn direct to "YCY" NDB. Continue climbing on OBD track of **027°T to 2600**. LEFT turn direct to "YCY" NDB. RIGHT shuttle climb INDB track **207°T** to MEA BPOC (max 250 kt).  
or  
SPEC VIS - ALL CATS - Climb visual over aprt to **1600**. Continue climb OBD track **027°T** from "YCY" NDB to **2600**. LEFT turn direct to "YCY" NDB. Then shuttle INDB track **207°T** to MEA BPOC (max 250 kt).

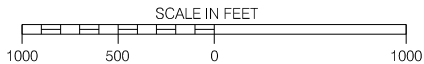


DEPARTURE CLIMB RATE V/V (FPM)

GROUND SPEED	90	120	140	160	180	200	250	300
410 FT/NM	620	820	960	1100	1230	1370	1710	2050

TAKE-OFF MINIMA

Rwys 02; 20: \*



Source of Canadian Civil Aeronautical Data: © 2019 NAV CANADA All rights reserved

AERODROME CHART

EFF 8 NOV 18

CYCY