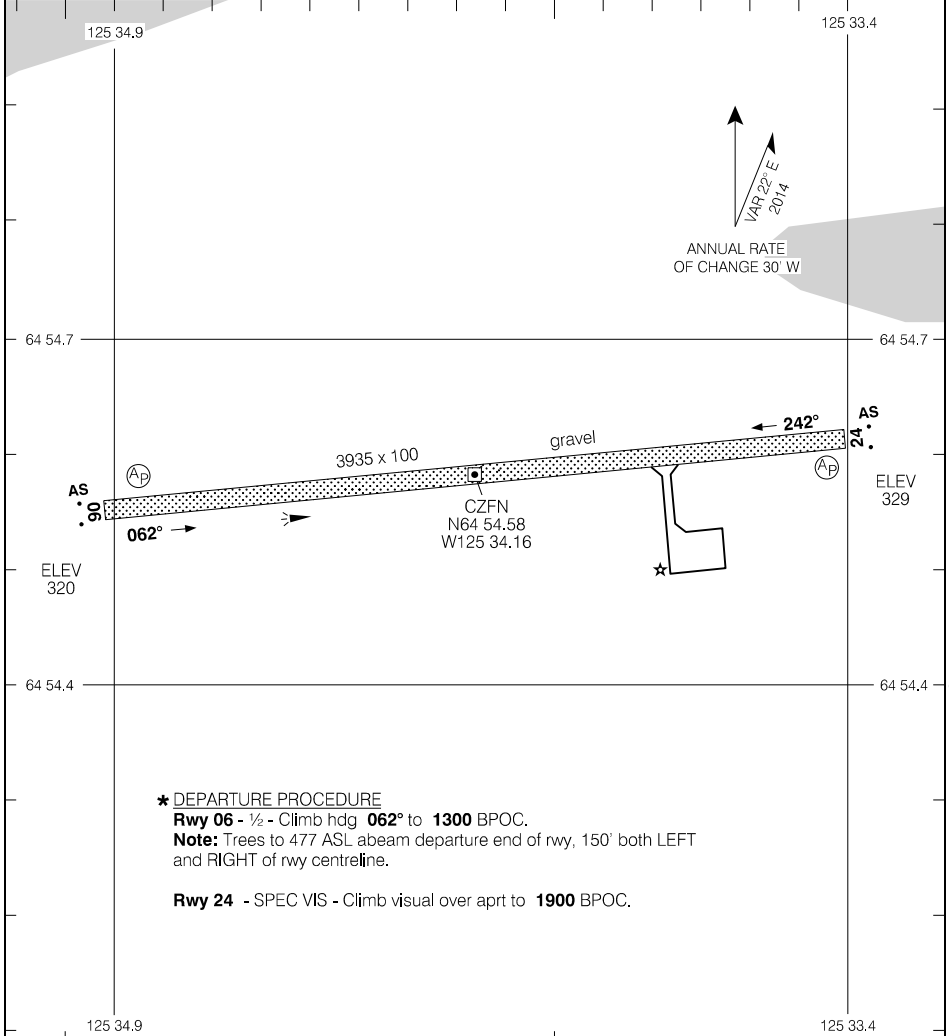


AERODROME CHART

| | | | | | | | |
|------|-------|------|------|---------------------------------------|--|----|--|
| | | | | ● APRT RADIO - 122.1 ● TFC - 122.1 | | MF | |
| DECL | DISTS | 06 | 24 | | | | |
| TORA | | 3935 | 3935 | | | | |
| TODA | | 4135 | 4135 | | | | |
| ASDA | | 3935 | 3935 | | | | |
| LDA | | 3935 | 3935 | | | | |



Source of Canadian Civil Aeronautical Data: © 2019 NAV CANADA All rights reserved

★ DEPARTURE PROCEDURE
Rwy 06 - ½ - Climb hdg **062°** to **1300** BPOC.
Note: Trees to 477 ASL abeam departure end of rwy, 150' both LEFT and RIGHT of rwy centreline.
Rwy 24 - SPEC VIS - Climb visual over aprt to **1900** BPOC.

TAKE-OFF MINIMA

Rwys 06, 24: ★

SCALE IN FEET

1000 0 1000

AERODROME CHART

EFF 25 APR 19

CZFN