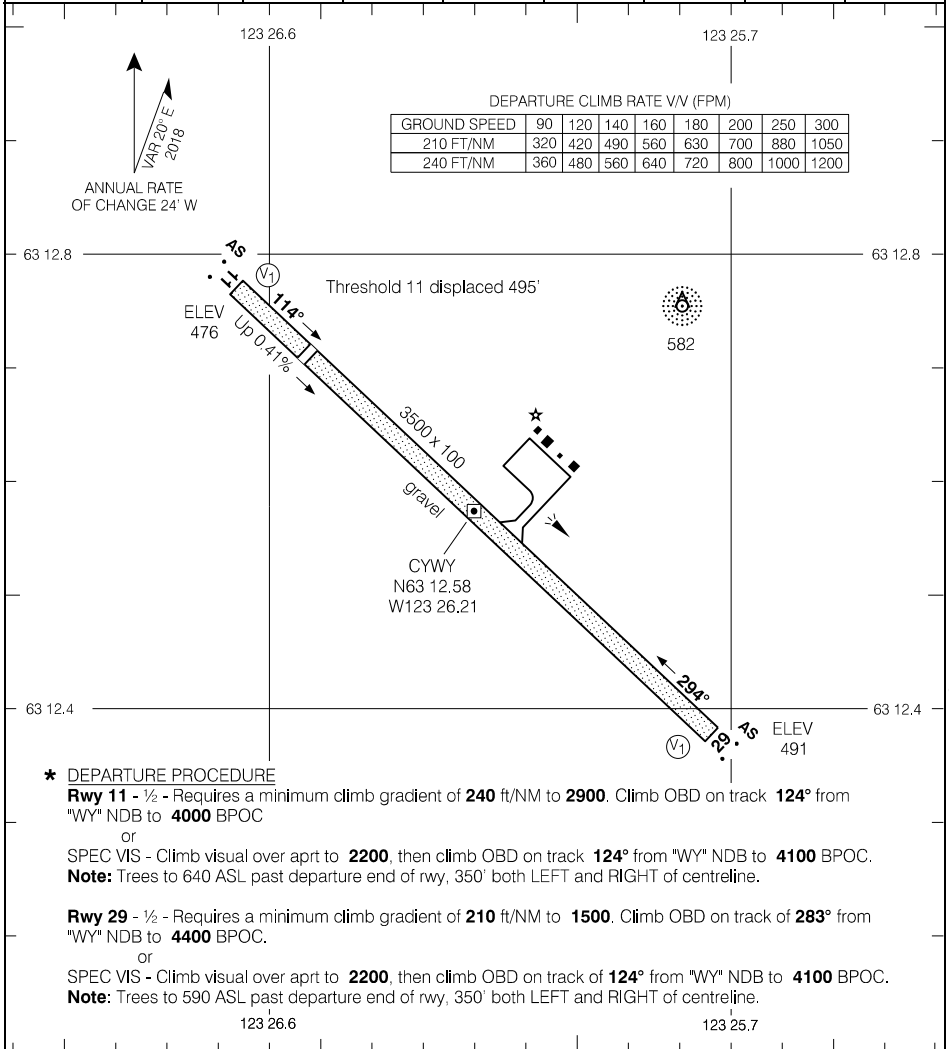


AERODROME CHART

				APRT RADIO - 122.1 TFC - 122.1		MF	
DECL DIST	11	29					
TORA	3500	3500					
TODA	3700	3700					
ASDA	3500	3500					
LDA	3005	3500					



Source of Canadian Civil Aeronautical Data: © 2019 NAV CANADA All rights reserved

- * DEPARTURE PROCEDURE**
- Rwy 11 - 1/2** - Requires a minimum climb gradient of **240** ft/NM to **2900**. Climb OBD on track **124°** from "WY" NDB to **4000** BPOC
or
SPEC VIS - Climb visual over apt to **2200**, then climb OBD on track **124°** from "WY" NDB to **4100** BPOC.
Note: Trees to 640 ASL past departure end of rwy, 350' both LEFT and RIGHT of centreline.
- Rwy 29 - 1/2** - Requires a minimum climb gradient of **210** ft/NM to **1500**. Climb OBD on track of **283°** from "WY" NDB to **4400** BPOC.
or
SPEC VIS - Climb visual over apt to **2200**, then climb OBD on track of **124°** from "WY" NDB to **4100** BPOC.
Note: Trees to 590 ASL past departure end of rwy, 350' both LEFT and RIGHT of centreline.

TAKE-OFF MINIMA

Rwys 11, 29: *

SCALE IN FEET

1000 0 1000