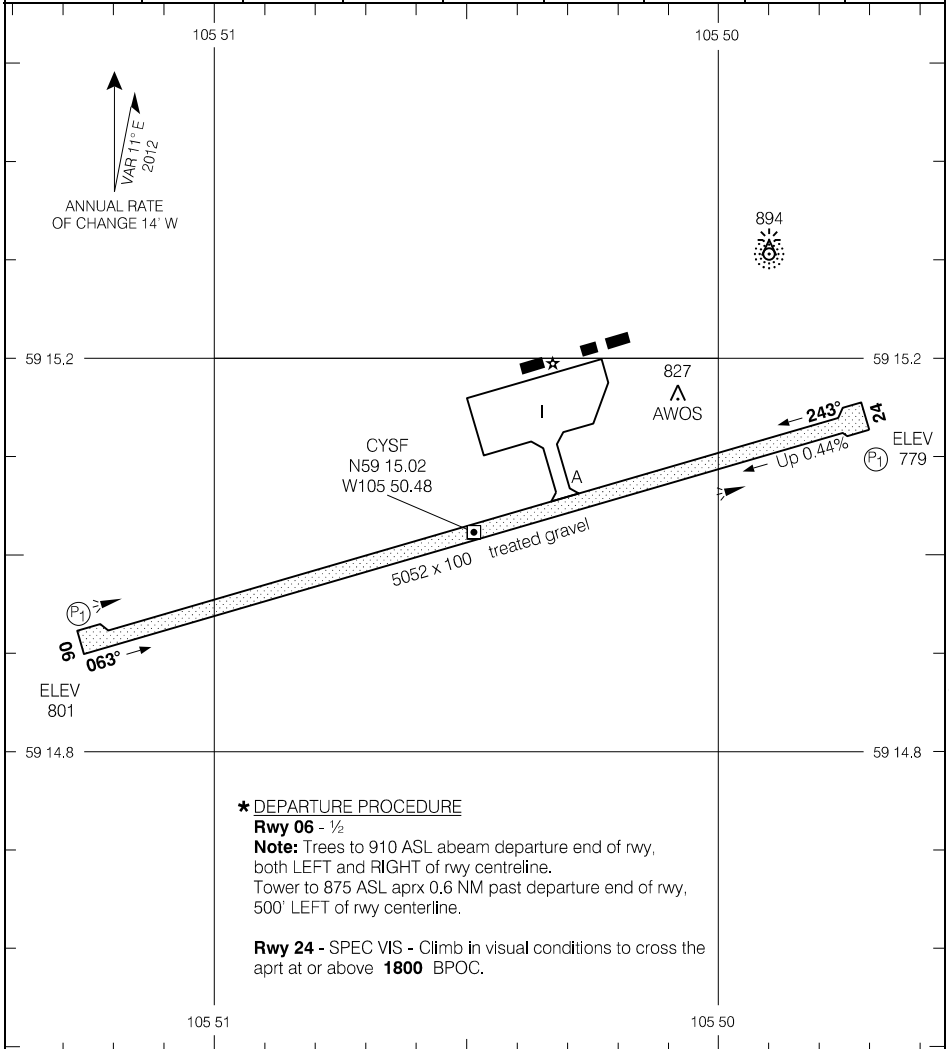


AERODROME CHART

AWOS - 128.75				RADIO Regina - 122.1 TFC - 122.1		RADIO Winnipeg - 122.37	
DECL	DISTS	06	24				
TORA		5052	5052				
TODA		6036	5552				
ASDA		5052	5052				
LDA		5052	5052				



Source of Canadian Civil Aeronautical Data: © 2019 NAV CANADA All rights reserved

*** DEPARTURE PROCEDURE**
Rwy 06 - 1/2
Note: Trees to 910 ASL abeam departure end of rwy, both LEFT and RIGHT of rwy centreline. Tower to 875 ASL aprx 0.6 NM past departure end of rwy, 500' LEFT of rwy centerline.
Rwy 24 - SPEC VIS - Climb in visual conditions to cross the apt at or above **1800** BPOC.

TAKE-OFF MINIMA
Rwys 06, 24: *



AERODROME CHART

EFF 3 JAN 19