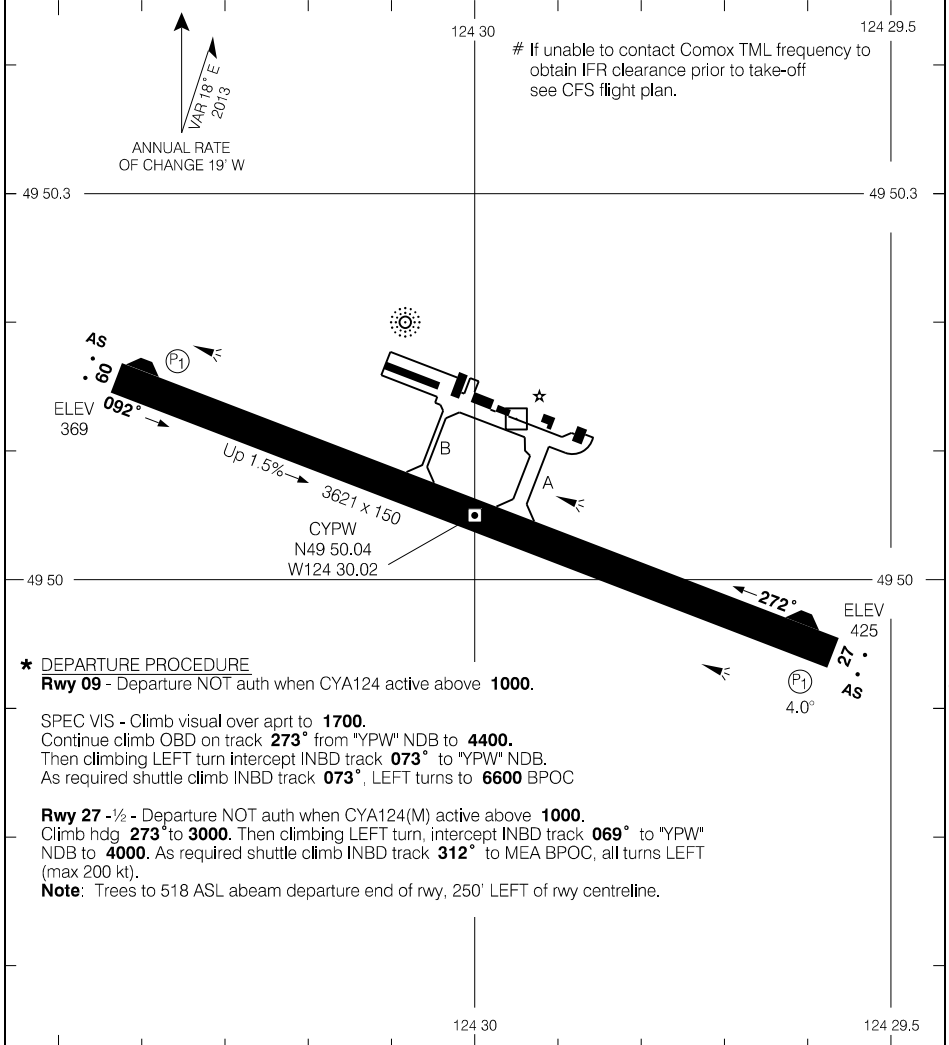


AERODROME CHART

				TFC - 123.0		TML Comox - 123.7 227.6	
				MF			
DECL	DISTS	09	27	09	27		
TORA		3621	3621	3621	3621		
TODA		4326	3965	4326	3965		
ASDA		3795	3728	3621	3621		
LDA		3621	3621	3621	3621		



Source of Canadian Civil Aeronautical Data: © 2019 NAV CANADA All rights reserved

**\* DEPARTURE PROCEDURE**

**Rwy 09** - Departure NOT auth when CYA124 active above **1000**.

SPEC VIS - Climb visual over aprt to **1700**.  
Continue climb OBD on track **273°** from "YPW" NDB to **4400**.  
Then climbing LEFT turn intercept INBD track **073°** to "YPW" NDB.  
As required shuttle climb INBD track **073°**, LEFT turns to **6600** BPOC

**Rwy 27 -1/2** - Departure NOT auth when CYA124(M) active above **1000**.  
Climb hdg **273°** to **3000**. Then climbing LEFT turn, intercept INBD track **069°** to "YPW" NDB to **4000**. As required shuttle climb INBD track **312°** to MEA BPOC, all turns LEFT (max 200 kt).

**Note:** Trees to 518 ASL abeam departure end of rwy, 250' LEFT of rwy centreline.

TAKE-OFF MINIMA

Rwys 09, 27: \*



AERODROME CHART

EFF 13 SEP 18

CYPW