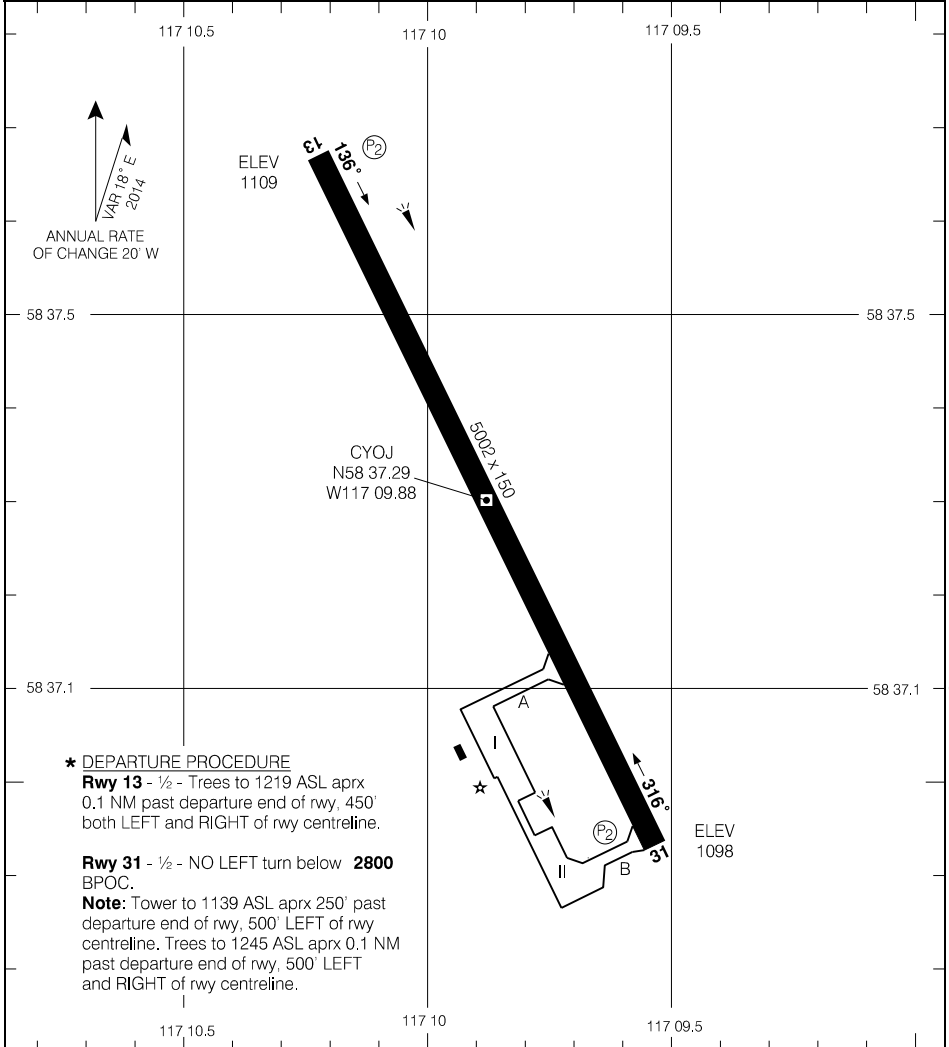


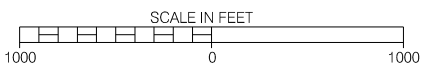
AERODROME CHART

● AWOS – 128.22				● RADIO – 123.25		CTR Edmonton – 123.7 135.1 RADIO Edmonton – 123.37	
				● TFC – 123.25		MF	
<b>DECL</b>	<b>DISTS</b>	<b>13</b>	<b>31</b>				
TORA		5002	5002				
TODA		5896	5986				
ASDA		5002	5002				
LDA		5002	5002				



**\* DEPARTURE PROCEDURE**  
**Rwy 13** - 1/2 - Trees to 1219 ASL aprx 0.1 NM past departure end of rwy, 450' both LEFT and RIGHT of rwy centreline.  
**Rwy 31** - 1/2 - NO LEFT turn below **2800** BPOC.  
**Note:** Tower to 1139 ASL aprx 250' past departure end of rwy, 500' LEFT of rwy centreline. Trees to 1245 ASL aprx 0.1 NM past departure end of rwy, 500' LEFT and RIGHT of rwy centreline.

<b>TAKE-OFF MINIMA</b>
Rwys 13, 31: *



Source of Canadian Civil Aeronautical Data: © 2019 NAV CANADA All rights reserved

AERODROME CHART

EFF 8 NOV 18